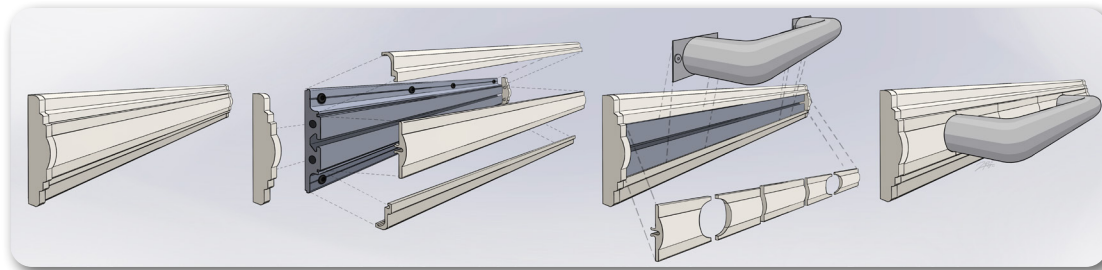


Mobius

Rail system to improve home safety & accessibility



Innovation Institute
Office of Innovation
and Entrepreneurship



Mobius is an adaptable rail system that is used in place of decorative architectural moulding throughout the home and serves as an anchor point for a range of accessibility components. After the system is adapted for the functional needs of the user, it can serve as a whole-home accessibility solution helping them move safely within and between rooms in the home, including their bedroom, kitchen, and bathroom.

Applications

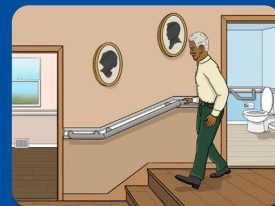
- Residential homes
- Buildings, architectural design companies
- Long term care facilities, assisted living, nursing homes

Advantages

- Reconfigurable system that adapts to user needs and abilities as their function changes
- Provides safe mobility in all areas of the home
- Can assist with multiple activities of daily living like bathing, transferring, and toileting
- Easy to install system - installed all at once in the home and quick disconnect interchangeable components
- Replaces architectural moulding of the home and is aesthetically pleasing
- The components can be easily attached, removed, and repositioned anywhere along the structural rail without the need of costly and timely home modifications or professional installation



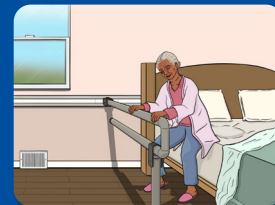
Grab bars for strength and balance



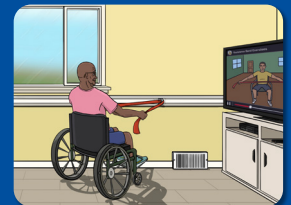
Handrails for balance and stability



Stair assist devices



In-and-out of bed assist devices



Devices to support physical activity

Mobius was developed with support from the VA Specially Adapted Housing Assistive Technology Grant



Development Status

A prototype of the Mobius system and grab bar attachments has been developed.

Inventors

A. Everette James III, JD MBA [Research Profile](#)
Jonathan L. Pearlman, PhD [Research Profile](#)
David M. Brienza, PhD [Research Profile](#)
Alexandra Marie Delazio, MS [Research Profile](#)
Todd Hargroder, [Research Profile](#)
Paulina Villacreces, MS [Research Profile](#)

Invention Readiness

Functional Prototype

IP Status

Patent Pending

Healthy Home Lab Contact Information

For more information visit our website at HealthyHomeLaboratory.pitt.edu

If you are interested in partnering, contributing or joining the Healthy Home Laboratory, contact us at HealthyHomeLab@pitt.edu

For licensing interest contact the University of Pittsburgh Office of Innovation and Entrepreneurship at partner@pitt.edu